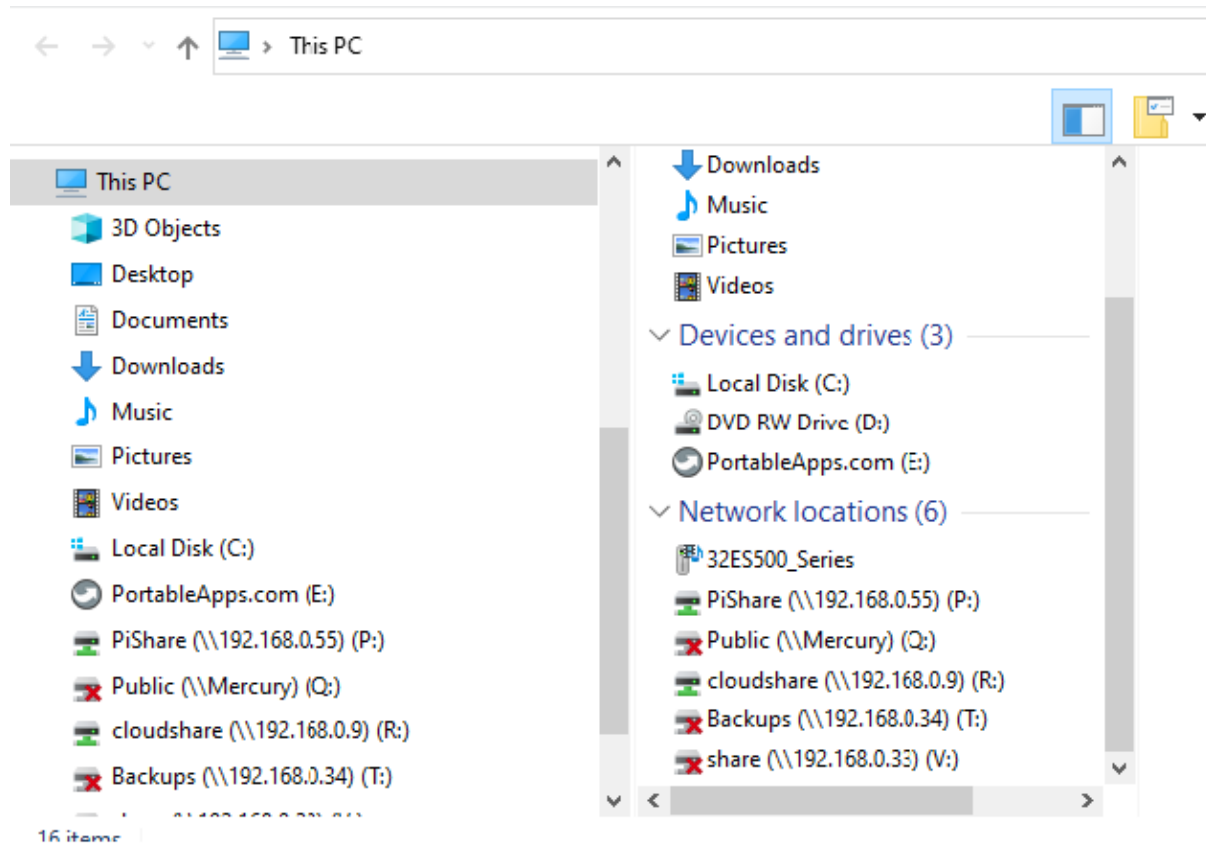




Mapped Drive issue under Windows 10 2004

We have noticed a subtle change in networking under the latest Windows update. This may or may not affect you but it is wise to know.

We will use our TPN Invoicing program as an example to show the effect. Here are the local drives on my computer –

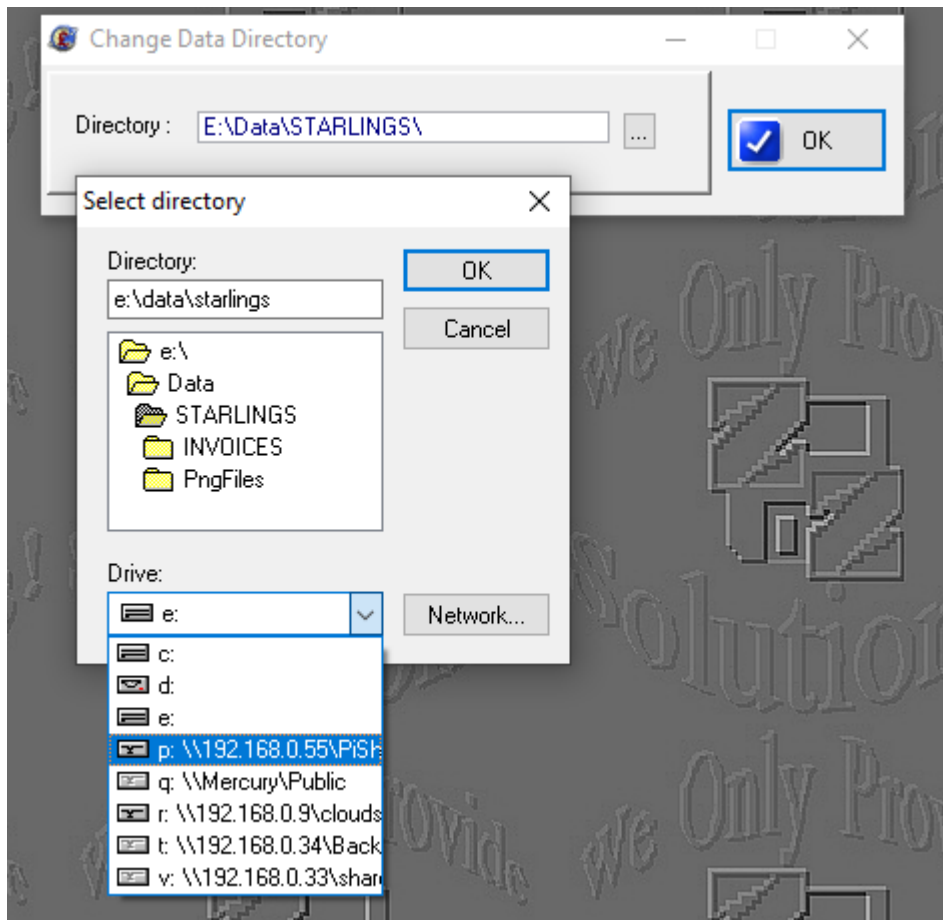


According to this my computer has local drives of C: D: and E:

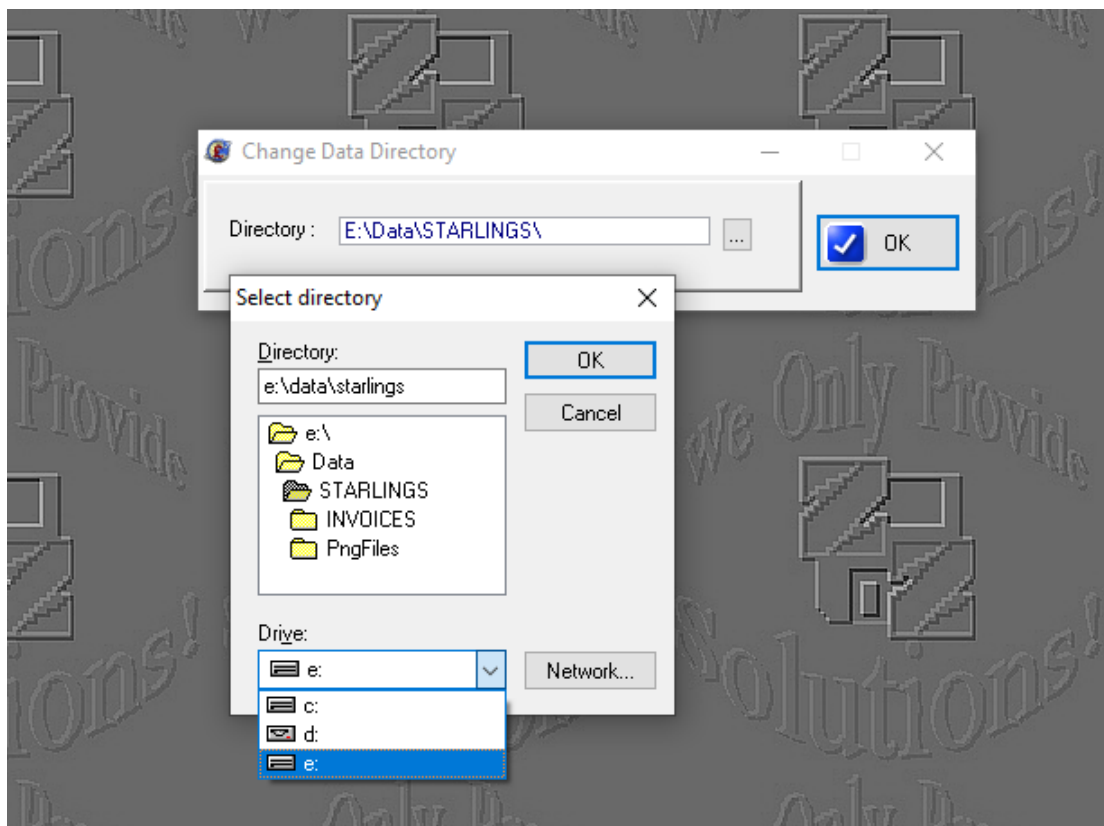
It also has available mapped drives of P: and R:

Drives Q: T: and V: are currently disconnected.

When I try to use TPN Invoicing with these drives then they should be available for me to choose –



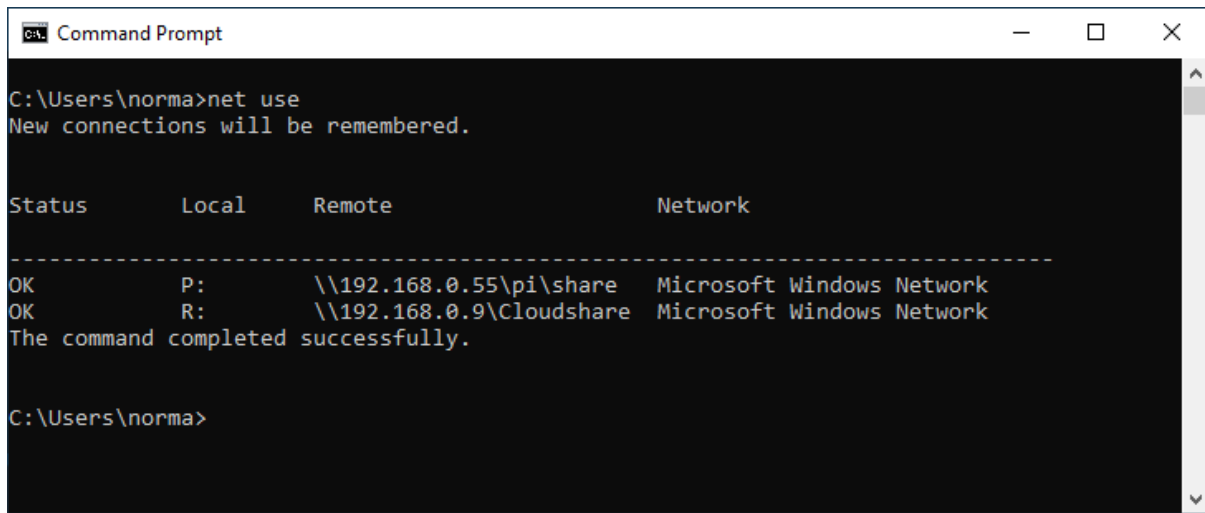
However, I may get this screen instead –



Where did the drives go?

This effect can also be seen by running the NET USE command from a DOS prompt.

Under a local account you may see this -

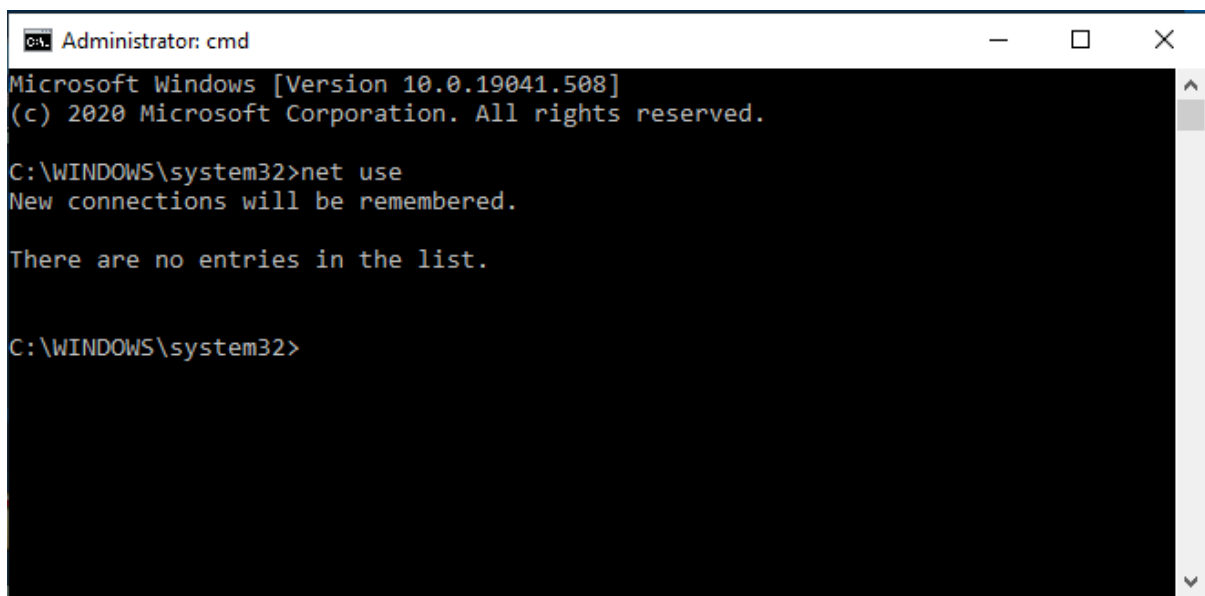


```
C:\Users\norma>net use
New connections will be remembered.

Status      Local      Remote      Network
-----
OK          P:        \\192.168.0.55\pi\share  Microsoft Windows Network
OK          R:        \\192.168.0.9\Cloudshare Microsoft Windows Network
The command completed successfully.

C:\Users\norma>
```

Under an Admin account you may see this -



```
Administrator: cmd
Microsoft Windows [Version 10.0.19041.508]
(c) 2020 Microsoft Corporation. All rights reserved.

C:\WINDOWS\system32>net use
New connections will be remembered.

There are no entries in the list.

C:\WINDOWS\system32>
```

When you run a program in an elevated mode you access the drives seen under the Admin account and not the Local Account.

The question is then, **“Why?”**

This is NOT a program issue and is a bit confusing to the average person.

It is a security issue caused by running the program in Windows Elevated Mode. It needs a security solution and not a program solution.

This is caused by either deliberately running the program in Windows Elevated Mode OR installing the program as an Administrator (programs should be installed as a Standard user level account and not as an Administrator).

Check the properties of the shortcut that runs TPN Invoicing and ensure that RUN AS ADMINISTRATOR is not ticked.

Effectively when you look through Windows Explorer the drives have been 'mapped' for the current user. When you run an elevated program it dumps the mapped drives from being visible since it treats you as a totally different user who hasn't got these drives mapped. To work properly the mapped drives have to be mapped for all users rather than just the current one. This is why you often get a warning message when installing new software asking if it is for the current user or all users. The effect is no different to two users logging into the same computer with one mapping an external drive, when the other user logs in they won't see the mapped drive. You don't have to reinstall the program to fix this as it is not a program issue.

Microsoft explanation – “This behaviour is by design.”

This effect would not be limited to TPN Invoicing but any program which ends up being run in Elevated Mode.

These explain what is actually happening -

<https://www.winability.com/how-to-make-elevated-programs-recognize-network-drives/>

<http://woshub.com/how-to-access-mapped-network-drives-from-the-elevated-apps/>

https://answers.microsoft.com/en-us/windows/forum/windows8_1-files/mapped-drive-does-not-show-up-when-browsing-from/be004a08-40a6-4758-879b-e2e62017c519

<https://support.microsoft.com/en-gb/help/2019185/copying-files-from-a-mapped-drive-to-a-local-directory-fails-with-erro>

When you first get a computer running Windows, the first account you create will be an Administrative account by default. You should then create a Standard Account for normal use. It is this one that should be used for installing programs. It is further complicated by whether you are using a Local Account or a Microsoft Account.

In addition to the above you may find that network NAS drives which use the older SMB1 networking protocol are no longer visible.

Resources which are not using the SMB3 protocol may also be affected, resulting in things like files on Linux shares suddenly become read-only.

You may need to speak to your I.T. support if you get this problem.